

GATEWAY WEST BUSINESS PARK

13+ acres available

The Gateway Northwest Industrial Park is owned by the Gateway Industrial Park Corporation, a non-profit corporation.

The park is conveniently located on Eau Claire's northwest side. A portion of the park is designated for high-tech companies.

Gateway West is Eau Claire's newest park and is home to businesses such as Nestle, Hutchinson Technology and Silver Spring Foods.



Strategic Location

- Located on Hwy 312
- 8 miles to I -94
- 2.6 miles to Hwy 29
- 4.5 miles from Hwy 53
- 72 miles East of Minneapolis/St. Paul Minutes from Chippewa Valley Regional Airport



Available Utilities

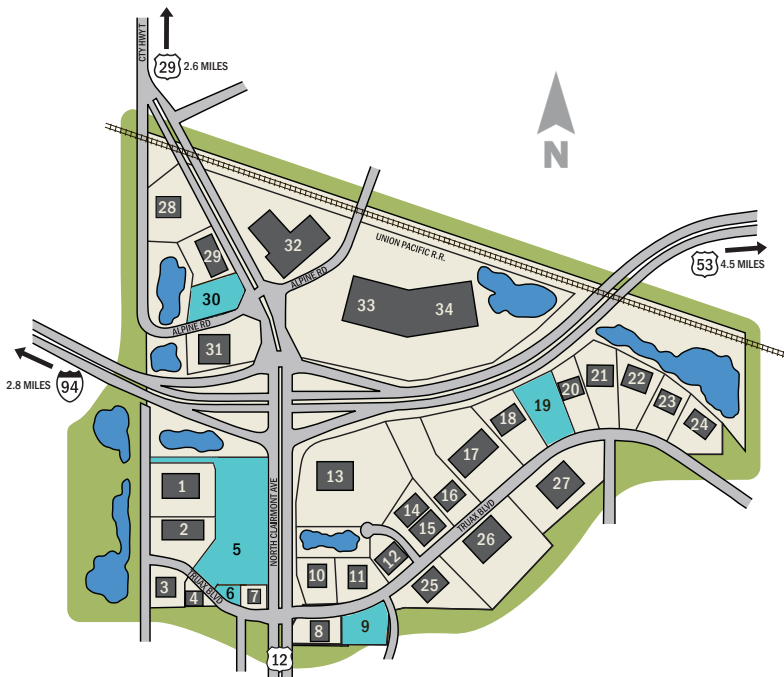
- Electricity provided by Xcel Energy
- Natural gas provided by Xcel Energy
- Municipal water available
- Sanitary & storm sewer available



Technology Infrastructure

- Fiber Optics
- ISDN
- DSL

SCAN QR CODE TO VIEW SITE ON GOOGLE MAPS



Lot	Status	
1	Nestle USA	16 Tru-Lock & Security
2	Ferguson Plumbing	17 Coca-Cola Vending
3	Industrial Storage	18 Culligan Water
4	Menards	19 Available - Building 4.3 acres
5	Available - Land 12.7 acres	20 Bearing Headquarters
6	Available - Land 2.0 acres	21 Wiersgalla Co
7	Jimmy Johns	22 Wisconsin Lift Truck
8	Pizza Ranch	23 Bright Beginnings
9	Available - Land 3.1 acres	24 Indianhead Library
10	L&M Mail & Courier	25 Viking Electric Supply
11	Fastenal	26 NMC - Wollard
12	Tess Oral Health	27 NLOC Innovations
13	Choice Products	28 Feed My People
14	Multiple - Full	29 IDEXX
15	Multiple - Full	30 Multiple - Available 3.3 acres
		31 Miller-Bradford & Risberg
		32 Silver Spring Foods
		33 Riverside Machine
		34 TDK/Hutchinson Tech