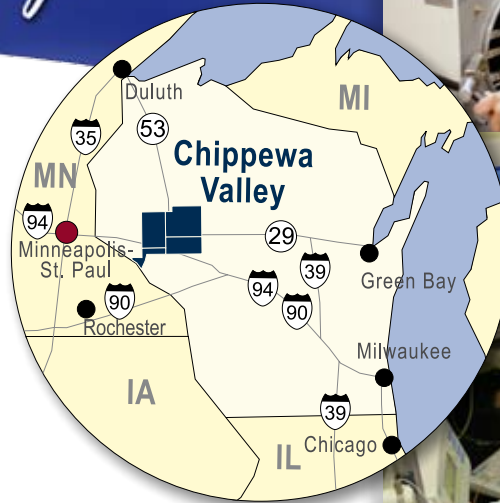


WISCONSIN'S Chippewa Valley

Wisconsin's Chippewa Valley is in the heart of the upper Midwest's robust Medical Device Industry. The life sciences in Wisconsin contribute over \$6.9 billion to the state's economy. The Wisconsin life sciences sector employs more than 22,000 people across the state.

Centrally located and just a short drive from Minneapolis-St. Paul, the Chippewa Valley includes Eau Claire, Chippewa, Dunn, and Pepin counties. It is home to innovative technology companies supported by nationally-ranked educational institutions. The Chippewa Valley's quality workforce, exceptional healthcare and lower cost of living could be just what your company needs to be more successful and profitable.



Distances from Eau Claire

Mpls./St. Paul, MN	83 mi.
Green Bay, WI	194 mi.
Madison, WI	178 mi.
Milwaukee, WI	246 mi.
Chicago, IL	323 mi.

MEDICAL DEVICE CLUSTER STATES: WISCONSIN WINS 5 STATE COMPARISON

STATE	WAGE	INDUSTRIAL RENT	COST OF DOING BUSINESS INDEX
Wisconsin	88.2	100.4	95.4
Illinois	107.5	103.5	103.7
Minnesota	101.7	133.0	107.9
California	112.5	136.8	124.2
Massachusetts	121.6	139.5	125.5

Source: Milken Institute Cost of Doing Business Index, 2005 (www.milkeninstitute.org)

COST OF LIVING

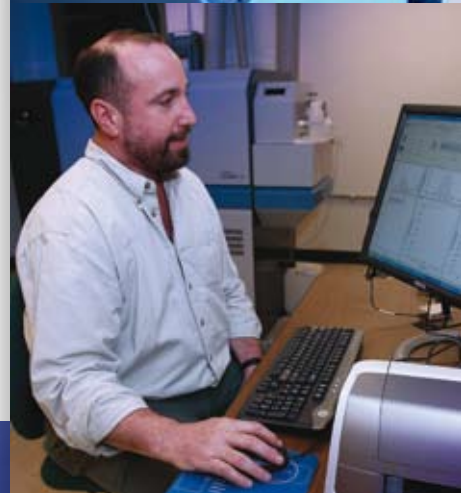
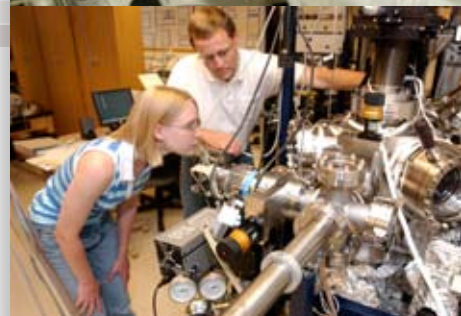
	EAU CLAIRE	ROCHESTER, MN	BOSTON	CHICAGO	LOS ANGELES	NAT'L
Composite	93.3	96.0	134.5	109.8	147.0	100.0
Grocery	90.9	89.0	121.8	103.5	117.5	100.0
Housing	78.1	90.5	169.3	124.0	256.5	100.0
Utilities	89.1	93.9	117.7	109.8	84.8	100.0
Transportation	110.6	96.5	103.2	110.5	112.6	100.0
Health Care	103.6	103.0	132.0	108.8	100.3	100.0
Miscellaneous	101.3	102.5	125.4	100.7	103.2	100.0

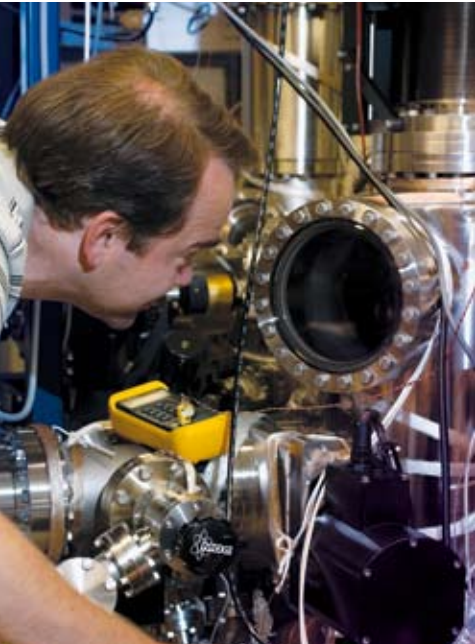
Source: ACCRA 2006 Composite, 4th quarter
(Minneapolis-St. Paul does not participate in the study)

SALARY COMPARISON BY MSA

POSITION TITLE	EAU CLAIRE	MPLS	BOSTON	CHICAGO	LOS ANGELES	NAT'L
Accountants and Auditors	\$51,410	\$59,520	\$63,000	\$66,770	\$64,800	\$60,670
Bookkeeping, Acctg. & Auditing Clerks	\$30,010	\$34,610	\$37,220	\$33,960	\$35,730	\$31,780
Clinical Lab Technologists	\$50,730	\$51,310	\$36,290	\$48,780	\$66,000	\$50,550
Computer & Info Systems Mgrs	\$85,630	\$108,780	\$117,570	\$103,210	\$116,690	\$107,250
Computer-Control Machine Tool Oprs	\$33,900	\$37,870	\$36,750	\$35,610	\$31,550	\$32,820
Computer Programmers	\$51,410	\$67,910	\$76,570	\$72,120	\$72,350	\$69,500
Customer Service Representatives	\$26,370	\$34,400	\$38,340	\$34,150	\$33,530	\$30,400
Electrical Engineers	\$43,810	\$77,590	\$94,830	\$75,140	\$83,550	\$78,900
Electrical Equipment Assemblers	\$28,940	\$29,630	\$33,130	\$24,990	\$24,860	\$27,510
Electricians	\$54,590	\$61,800	\$55,950	\$62,190	\$49,850	\$46,620
Executive Secretaries	\$34,340	\$40,800	\$45,350	\$40,710	\$42,820	\$39,160
First Line Sups/Mgrs of Production	\$44,220	\$53,510	\$56,570	\$54,800	\$48,530	\$50,480
General Managers	\$91,200	\$110,040	\$111,120	\$107,860	\$116,010	\$99,280
Industrial Machinery Mechanics	\$35,170	\$46,860	\$47,370	\$47,380	\$45,900	\$42,570
Industrial Production Mgrs	\$77,430	\$94,560	\$96,680	\$83,320	\$84,540	\$83,970
Industrial Truck Operators	\$27,220	\$34,310	\$31,460	\$31,150	\$35,390	\$29,090
Machinists	\$35,850	\$41,270	\$41,720	\$36,010	\$36,560	\$35,810
Network & Computer Systems Admins	\$61,100	\$66,360	\$73,930	\$63,470	\$68,840	\$65,260
Production Workers	\$21,160	\$24,800	\$23,660	\$21,550	\$20,270	\$22,120
Shipping, Receiving and Traffic Clerks	\$26,550	\$31,190	\$31,680	\$28,670	\$28,160	\$27,480

Source: Bureau of Labor Statistics, May 2006 Metropolitan Area Occupational Employment and Wage Estimates





OUR CRITICAL TALENT

REGIONAL STUDENT POPULATION

University of Wisconsin-Eau Claire (www.uwec.edu)	10,566
University of Wisconsin-Stout (www.uwstout.edu)	8,416
Chippewa Valley Technical College (www.cvtc.edu)	7,000+
Lakeland College (www.lakeland.edu)	202

Four-year degrees

B.S.-Applied Mathematics and Computer Science*
B.S.-Applied Science**
B.S.-Biochemistry/Molecular Biology
B.S.-Chemistry
B.S.-Engineering Technology
B.S.-Packaging***
B.S.-Physics
B.S.-Technical Communication
B.S.-Vocational Rehabilitation****
B.S.-Manufacturing Engineering

Two-year degrees

Clinical Lab Technician
Electromechanical Technology
Health Information Technology
Information Technology-Networking
Information Technology-Programming
Machine Tooling Technics
Nanoscience Technology

Source: UWEC, UW-Stout, CVTC, Lakeland College

- * concentration in Bioinformatics
- ** concentrations in Biotechnology, Laboratory Management, and Scientific Sales and Support
- *** concentration in Medical Device/Health Care Packaging
- **** concentration in Rehabilitation Technology

NANO-STEM STATE BUDGET ALLOCATION

The Nano-STEM initiative provides funding for additional faculty in the fields of math, technology, applied sciences and engineering. Due to this Wisconsin budget item, over 500 additional students in the fields of Math, Science, Polymer Engineering, Biotechnology, Nanotechnology, and Computer and Electrical engineering will add to our annual production of critical talent.

NANORITE—A CENTER FOR INNOVATION

Flexible Incubation Space Opens in June 2007

- 40,000 sq. ft. facility
- Class 100 clean room environment available

MATERIALS SCIENCE CENTER

Access Expertise and Equipment

The Materials Science Center at the University of Wisconsin- Eau Claire provides technical problem solving to business and industry. The Center connects companies to an inter-disciplinary team of world-class faculty and instrumentation. The Materials Science Center has assisted companies with new product development, failure analysis, production process verification, and characterization of coatings and raw materials.



**Eau Claire Area Economic
Development Corporation**
101 N. Farwell Street, Suite 101
P.O.Box 1108
Eau Claire, WI 54702
ec.info@eauclaire-wi.com
www.eauclaire-wi.com